



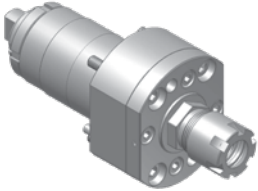
# SWISS TOOL

## Selection Guide



# TSUGAMI SWISS TOOLING

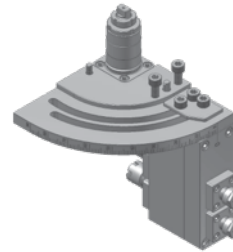
## S205/S206 TOOLING FOR GANG TOOL POST



**TSS161000**  
Cross drilling/milling unit

---

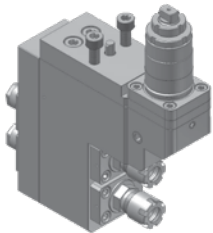
RATIO 1 : 1  
RPM(MAX) 8000  
TOOL CLAMPING ER16M



**TSS562100**  
2 spindle drilling/milling unit

---

RATIO 1 : 1  
RPM(MAX) 8000  
TOOL CLAMPING  
Front side : ER16M  
Back side : ER11A  
ANGLE ADJUSTMENT 0~90°

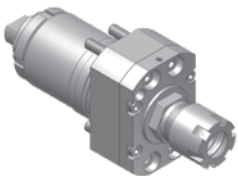


**TSS562000**  
2 spindle drilling/milling unit

---

RATIO 1 : 1  
RPM(MAX) 8000  
TOOL CLAMPING  
Front side : ER16M  
Back side : ER11A

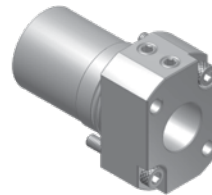
## S205/S206 TOOLING FOR BACK TOOL POST



**TSS761000**  
Drilling/milling unit

---

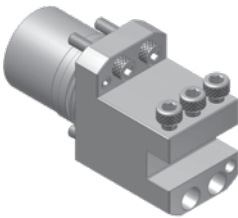
RATIO 1 : 1  
RPM(MAX) 8000  
TOOL CLAMPING ER16M



**TSS601000**  
Tool adaptor

---

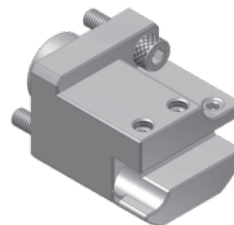
TOOL SHANK Ø35.0mm  
SLEEVE SHANK Ø20.0mm



**TSS620100**  
Turning tool holder

---

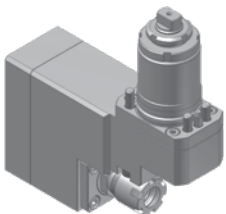
TOOL SHANK Ø35.0mm  
BITE HOLDER SHANK  
12x12mm



**TSS620100-1**  
Turning tool holder

---

TOOL SHANK Ø20.0mm  
BITE HOLDER SHANK 10x10mm



**TSS861000**  
Slotting(Cross drilling/milling) unit

---

RATIO / 1 : 1  
RPM(MAX) / 6000  
TOOL CLAMPING / ER16M

## BO266/BO326 TOOLING FOR SUB SPINDLE

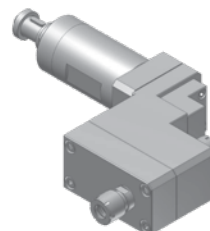


**TSB866100**  
Cross drilling/milling unit

---

RATIO 1 : 1  
RPM(MAX) 6000  
TOOL CLAMPING ER16M  
TSUGAMI ITEM NO. 3290-Y041

## BO26V TOOLING FOR GANG TOOL POST

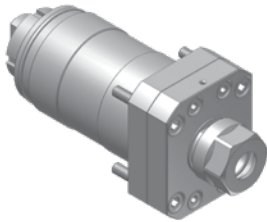


**TSB511000**  
1 spindle drilling/milling unit

---

RATIO 1 : 1  
RPM(MAX) 6000  
TOOL CLAMPING ER16A

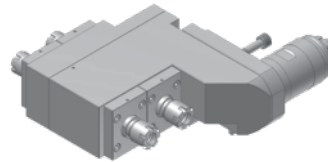
## BO385 TOOLING FOR GANG TOOL POST



**TSB246100**  
Cross drilling/milling unit

---

RATIO 1 : 1  
RPM(MAX) 6000  
TOOL CLAMPING ER16A  
TSUGAMI ITEM NO. 3268-T051



**TSB546200**  
2 spindle drilling/milling unit

---

RATIO 1 : 1  
RPM(MAX) 6000  
TOOL CLAMPING ER16M  
TSUGAMI ITEM NO. 3282-Y901



**TSB496200**  
2 spindle drilling/milling unit

---

RATIO 1 : 1  
RPM(MAX) 6000  
TOOL CLAMPING ER16M  
ANGLE ADJUSTMENT 0~90°

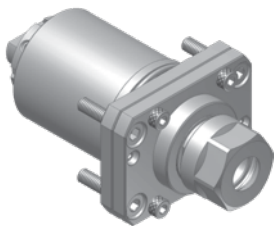


**TSB596200**  
2 spindle drilling/milling unit

---

RATIO 1 : 1  
RPM(MAX) 6000  
TOOL CLAMPING ER16M  
ANGLE ADJUSTMENT 0~90°  
TSUGAMI ITEM NO. 3282-Y921

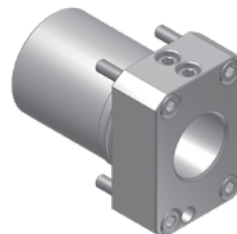
## BO385 TOOLING FOR BACK TOOL POST



**TSB746100**  
Drilling/milling unit

---

RATIO 1 : 1  
RPM(MAX) 6000  
TOOL CLAMPING ER16A  
TSUGAMI ITEM NO. 3282-Y041

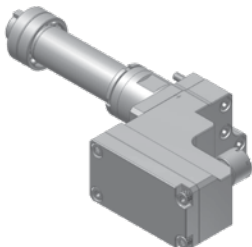


**TSB640100**  
Tool adaptor

---

TOOL SHANK Ø42.0mm  
SLEEVE SHANK Ø25.0mm  
TSUGAMI ITEM NO. 3282-Y211

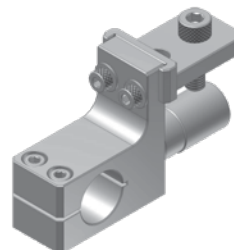
## B0125/B0205 TOOLING FOR GANG TOOL POST



**TSB411000**  
1 spindle drilling/milling unit

---

RATIO 1 : 1  
RPM(MAX) 6000  
TOOL CLAMPING ER16A



**TSB601000**  
Air tool holder

---

TOOL SHANK Ø20.0mm  
AIR TOOL SHANK Ø22.8mm  
AIR TOOL Straight spindle NR303

## BO266 / BO326 / BO385 TOOLING



**TSB241100**  
Cross drilling/milling unit

---

RATIO 1 : 2  
RPM(MAX) 12,000  
TOOL CLAMPING ER11A



**TSB741100**  
Drilling/milling unit, sub

---

RATIO 1 : 2  
RPM(MAX) 12,000  
TOOL CLAMPING ER11A



Tel: 1.800.249.5662  
Fax: 860.623.4132

[info@komaprecision.com](mailto:info@komaprecision.com)  
[www.komaprecision.com](http://www.komaprecision.com)

20 Thompson Road  
East Windsor, CT 06088