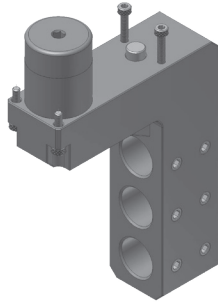




SWISS TOOL

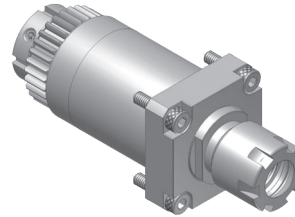
Selection Guide

TOOLING FOR GANG TOOL POST (SHANK Ø34mm)



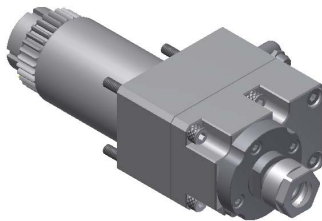
STR140300
3 tool sleeve holder

TOOL SHANK Ø34mm
DRILL SLEEVE SHANK Ø22 mm
Mounted on T3500
MACHINE: SR20R / SR32J



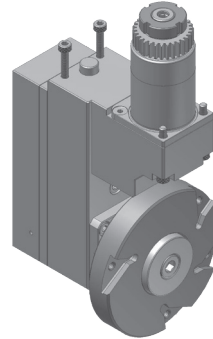
STR161000
Cross drilling/milling unit

RATIO 1:1
RPM(MAX) 8000
TOOL CLAMPING ER16M
STAR ITEM NO. 331-50
MACHINE: SR20R / SR32J



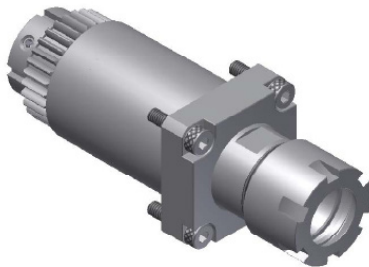
STR161100
Cross drilling/milling unit

RATIO 3:1
RPM(MAX) 18000
TOOL CLAMPING ER11A
MACHINE: SR20R / SR32J



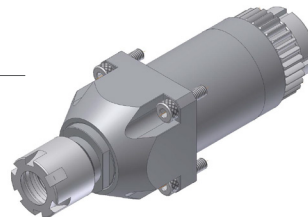
STR150100
Polygone unit

RATIO 1:0.6
RPM(MAX) 3000
CUTTER OD(MAX) Ø95 mm
MACHINE: SR20R / SR32J



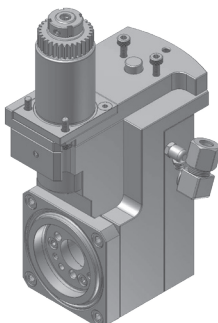
STR162100
Cross drilling/milling unit

RATIO 1:1
RPM(MAX) 8000
TOOL CLAMPING ER20M
MACHINE: SR20R / SR32J



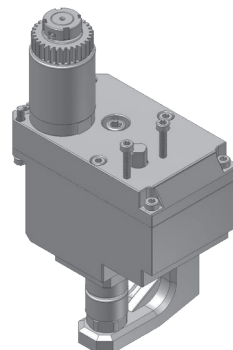
STR166100
Cross drilling/milling unit

RATIO 1:1
RPM(MAX) 8000
TOOL CLAMPING ER16M
STAR ITEM NO. 571-55
MACHINE: SR20R / SR32J



STR260100
Thread whirling unit

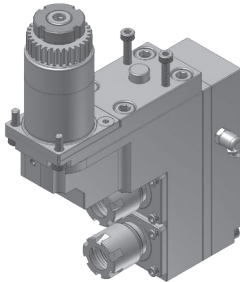
RATIO 1 : 1
RPM(MAX) 6000
THREAD(MAX) M12
HELIX ANGLE ±20°
MACHINE: SR20R



STR301000
Slotting unit

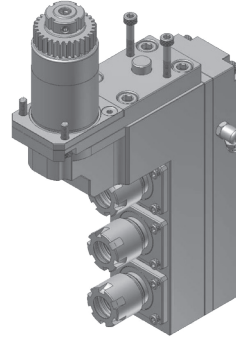
RATIO 1 : 0.374
RPM(MAX) 4000
SAW OD(MAX) Ø70 mm
SAW ARBOR SHANK Ø12.7 mm
MACHINE: SR20R

TOOLING FOR GANG TOOL POST (SHANK Ø34mm)



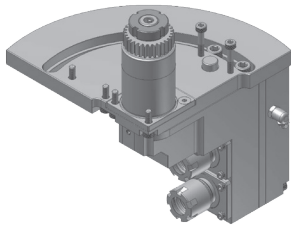
STR446200
2 spindle drilling/milling unit

RATIO 1 : 1
RPM(MAX) 6000
TOOL CLAMPING ER16M
STAR ITEM NO. 541-51
MACHINE: SR20R



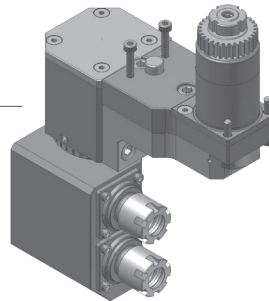
STR446300 / STR446300-1
3 spindle drilling/milling unit

RATIO 1 : 1
RPM(MAX) 6000
TOOL CLAMPING ER16M
STAR ITEM NO. STR446300 : 661-51
MACHINE: SR20R / SR32J



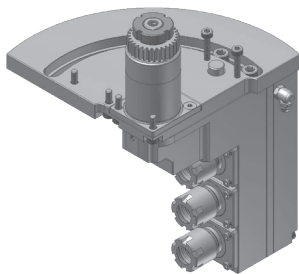
STR496200
2 spindle drilling/milling unit

RATIO 1 : 1
RPM(MAX) 6000
TOOL CLAMPING ER16M
ANGLE ADJUSTMENT 0~90°
MACHINE: SR20R



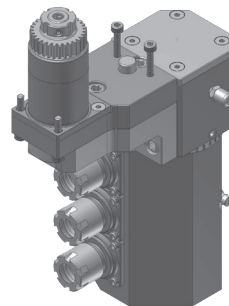
STR496200-2
2 spindle drilling/milling unit

RATIO 1 : 1
RPM(MAX) 6000
TOOL CLAMPING ER16M
ANGLE ADJUSTMENT ±180°
MACHINE: SR32J



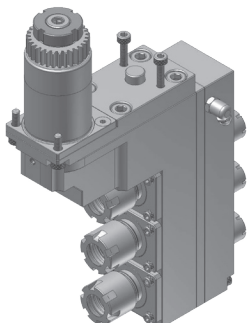
STR496300
3 spindle drilling/milling unit

RATIO 1 : 1
RPM(MAX) 6000
TOOL CLAMPING ER16M
ANGLE ADJUSTMENT 0~90°
MACHINE: SR20R



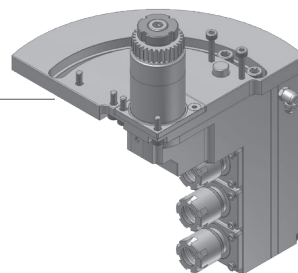
STR496300-2
3 spindle drilling/milling unit

RATIO 1 : 1
RPM(MAX) 6000
TOOL CLAMPING ER16M
ANGLE ADJUSTMENT ±180°
MACHINE: SR20R



STR546300 / STR546300-1
3 spindle drilling/milling unit

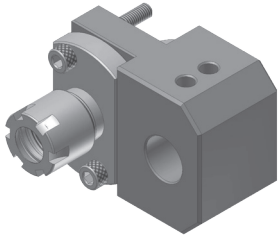
RATIO 1 : 1
RPM(MAX) 6000
TOOL CLAMPING
Front side : ER16M
Back side : ER11M
STAR ITEM NO. STR546300-1 : 671-59
MACHINE: SR20R



STR596300
3 spindle drilling/milling unit

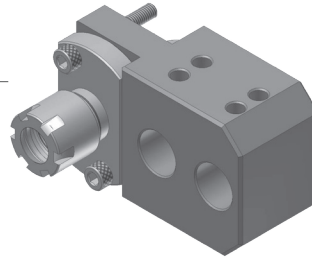
RATIO 1 : 1
RPM(MAX) 6000
TOOL CLAMPING
Front Side: ER16M
Back Side: ER11
ANGLE ADJUSTMENT 0~90°
MACHINE: SR20R

TOOLING FOR BACK TOOL POST (SHANK Ø16/Ø22mm)



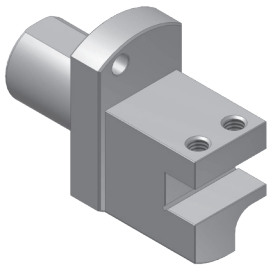
STJ640100
Extension tool holder

TOOL SHANK Ø22.0mm
TOOL CLAMPING ER16M
DRILL SLEEVE SHANK Ø16.0mm
MACHINE SR20J



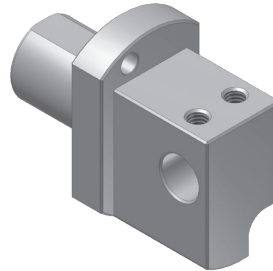
STJ640200
Extension tool holder

TOOL SHANK Ø22.0mm
TOOL CLAMPING ER16M
DRILL SLEEVE SHANK Ø16.0mm
MACHINE SR32J / JN



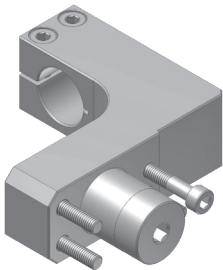
KDA22010SG
Turning tool holder

TOOL SHANK Ø22.0mm
BITE HOLDER SHANK 10x10mm
MACHINE: SR20R / SR20J / SR32J



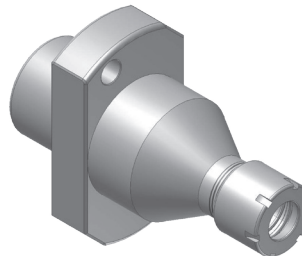
STR620100
Turning tool holder

TOOL SHANK Ø22.0mm
BITE HOLDER SHANK Ø12.0mm
MACHINE: SR20R / SR20J / SR32J



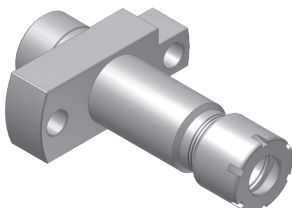
STR601000
Air tool holder

TOOL SHANK Ø22.0mm
AIR TOOL SHANK Ø20.0mm
MACHINE: SR20R



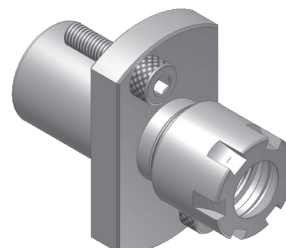
STR641100
Drill sleeve

TOOL SHANK Ø22.0mm
TOOL CLAMPING ER11M
MACHINE: SR20J



STR641100J
Drill sleeve

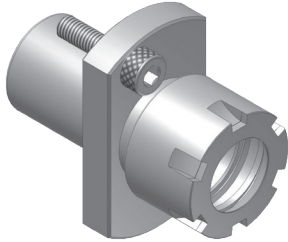
TOOL SHANK Ø16.0mm
TOOL CLAMPING ER11M
MACHINE SR10J



STR646100
Drill sleeve

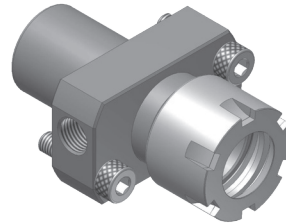
TOOL SHANK Ø22.0mm
TOOL CLAMPING ER16M
MACHINE: SR20R / SR32J

TOOLING FOR BACK TOOL POST (SHANK Ø22mm)



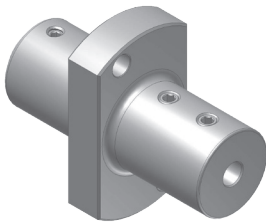
STR642100
Drill sleeve

TOOL SHANK Ø22.0mm
TOOL CLAMPING ER20M
MACHINE: SR20R / SR32J



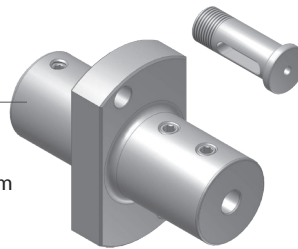
STR642100-1
Drill sleeve (Internal coolant type)

TOOL SHANK Ø22.0mm
TOOL CLAMPING ER20M
MACHINE: SR20R



KSR22000
Boring bar sleeve

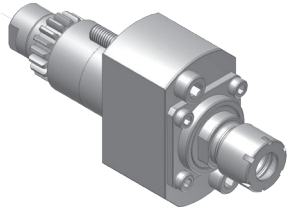
TOOL SHANK Ø22.0mm
BORING BAR SHANK
Ø3.0/4.0/5.0/6.0/8.0/10.0/12.0/16.0mm
MACHINE: SR20R



KSR22120
Boring bar sleeve (Bushing type)

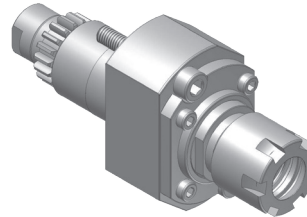
TOOL SHANK Ø22.0mm
BUSHING OD Ø12.0mm
BUSHING ID (BORING BAR SHANK) /
Ø3.0/4.0/5.0/ 6.0/8.0/9.0/10.0mm
MACHINE: SR20R

TOOLING FOR BACK TOOL POST (SHANK Ø22mm)



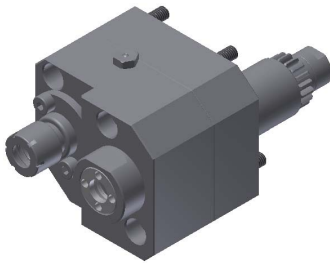
STR711000
Drilling/milling unit

RATIO 1 : 1
RPM(MAX) 6000
TOOL CLAMPING ER11M
STAR ITEM NO. 541-61
MACHINE: SR20R



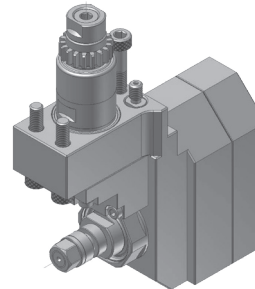
STR761000
Drilling/milling unit

RATIO 1 : 1
RPM(MAX) 6000
TOOL CLAMPING ER16M
STAR ITEM NO. 571-61
MACHINE: SR20R



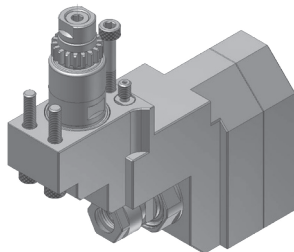
STR761200
Drilling/milling unit

RATIO 3 : 1
RPM(MAX) 18000
TOOL CLAMPING ER11/ER11M
MACHINE: SR20R/ECAS12/
ECAS20



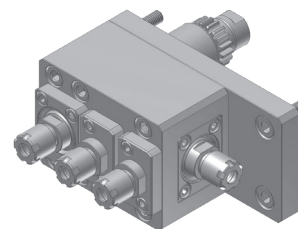
STR731000
Slotting unit

RATIO 1 : 0.55
RPM(MAX) 4000
SAW OD(MAX) Ø50
SAW ARBOR SHANK
Ø5.0/6.0/8.0/12.7/13.0mm
MACHINE: SR10J / SR20R



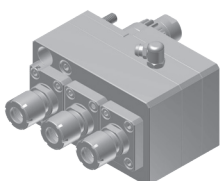
STR731100
Slotting unit

RATIO 1 : 0.55
RPM(MAX) 4000
TOOL CLAMPING ER11A
MACHINE: SR10J / SR20R



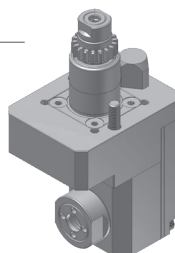
STR714000
Cross drilling/milling and
face drilling/milling unit

RATIO 1 : 1
RPM(MAX) 6000
TOOL CLAMPING ER8M
MACHINE SR10J



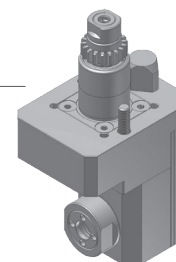
STR741300
3 spindle drilling/milling unit

RATIO 1 : 1
RPM(MAX) 8000
TOOL CLAMPING ER11M
MACHINE NEW TYPE SR20RIII
SR20J with PIN HOLE
(FANUC 31i VERSION)



**STR811000-10J/
STR811000-20R**
Cross drilling/milling unit

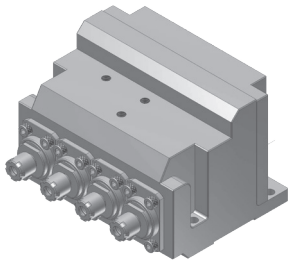
RATIO 1 : 1
RPM(MAX) 6000
TOOL CLAMPING ER11
MACHINE: SR 10J / SR20R



STR861100
Cross drilling/milling unit

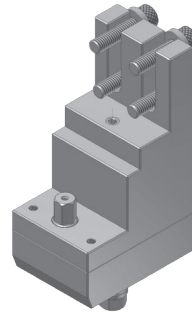
RATIO 1 : 1
RPM(MAX) 8000
TOOL CLAMPING ER11M
MACHINE: SR20J/SB20R

TOOLING FOR GANG TOOL POST SB16/SB20



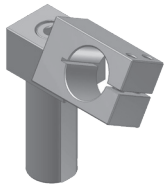
STB268400
4 spindle cross drilling/milling unit

RATIO 1 : 1.5
RPM(MAX) 3000
TOOL CLAMPING ER8M
MACHINE: SB 16/20



STB301000
Slotting unit

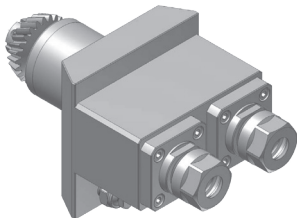
RATIO 1 : 0.392
RPM(MAX) 4000
SAW OD(MAX) Ø30
SAW ARBOR SHANK Ø6.0mm



STB401000
Air tool holder

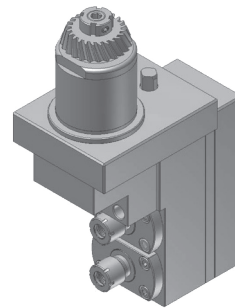
TOOL SHANK Ø22.0mm
AIR TOOL SHANK Ø23.0mm
MACHINE: SB16R / SB20R

TOOLING FOR TURRET TOOL POST (SHANK Ø44mm)



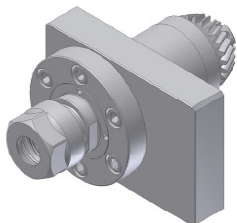
STV161200
2 spindle cross drilling/milling unit

RATIO 1 : 1
RPM(MAX) 6000
TOOL CLAMPING ER16A
STAR ITEM NO. 421-51
MACHINE: SV20 / SV32



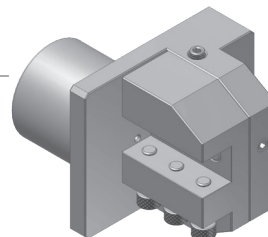
STV512000
2 spindle drilling/milling unit

RATIO 1 : 1.16
RPM(MAX) 6000
TOOL CLAMPING ER11M
STAR ITEM NO. 421-59
MACHINE: SV20 / SV32



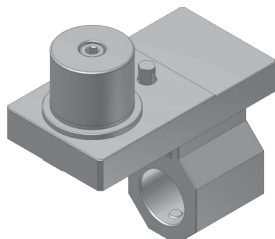
STV10302000
Cross drilling/milling unit

RATIO 1 : 1
RPM(MAX) 6000
TOOL CLAMPING ER20A
MACHINE: STAR SV32/ECAS32T/ST38



STV901000
Turning bite holder

TOOL SHANK Ø44.0mm
BITE HOLDER SHANK 16x16mm
CENTER ADJUSTMENT ±1mm
MACHINE: SV32J



STV140100
1 station boring bar holder

TOOL SHANK Ø44.0mm
BORING BAR SHANK Ø32.0mm
MACHINE: SV20 / SV32 (Mounted on Turret)



Tel: 1.800.249.5662
Fax: 860.623.4132

info@komaprecision.com
www.komaprecision.com

20 Thompson Road
East Windsor, CT 06088