

# Alberti

## Live Tools

with  SmartChange

## Selection Guide



## KOMA PRECISION

For over thirty-five years Koma Precision has been the foremost source for the finest the world has to offer in machine tool Productivity Innovation.

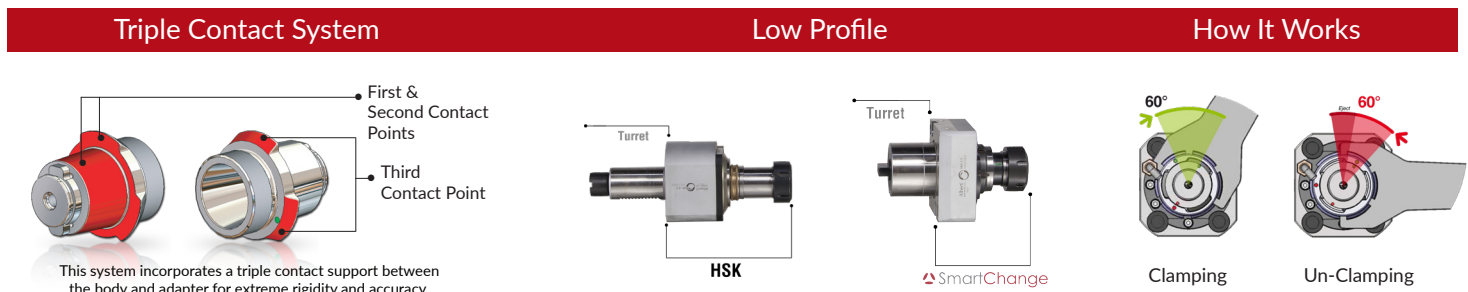
With over 30,000 rotary table installations, Koma is the largest distributor of Tsudakoma NC rotary tables and indexers in the world. With over 12,000 angle heads and live tools installed, Koma is the world's largest supplier for Alberti - the originator and the foremost innovator of productivity tooling.



## SMART CHANGE SYSTEM

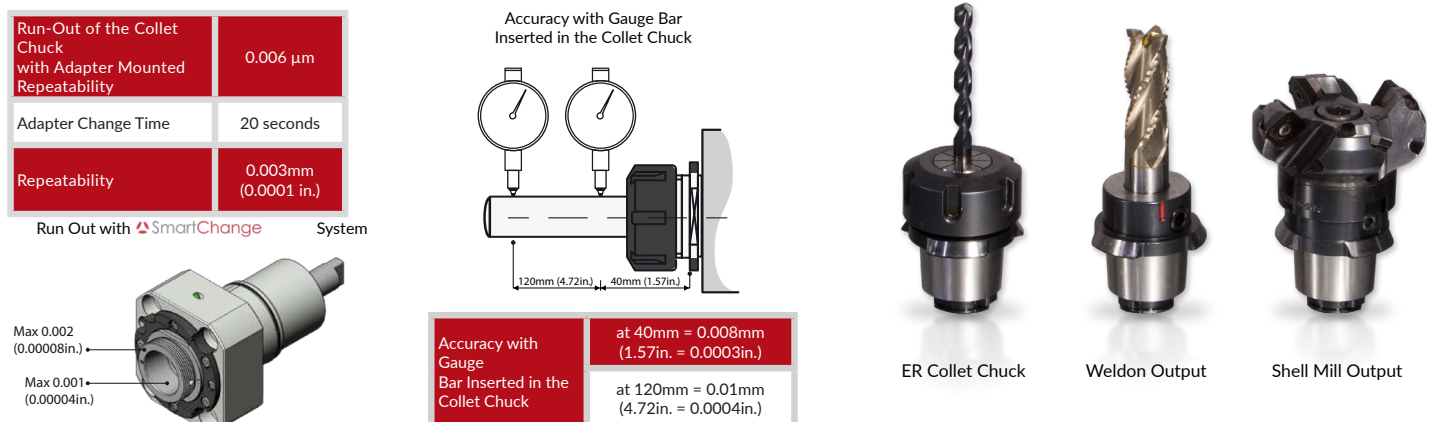
New from Alberti, a complete range of live tools with interchangeable adapters for Okuma are now available in stock. The SmartChange System units have a standard profile with **no additional projection** to reduce the chance of interference with the machine's enclosures. Alberti's patent pending design creates **three points of contact** between the driven tool holder body and tool holder output surfaces so there is no compromise in concentricity and rigidity to gain the speed and convenience of quick-change tooling. With the SmartChange System one set of live tools can always stay in the machine with only the adapters needing to be changed. This provides **improved efficiency and flexibility**, plus a reduction in overall tooling costs.

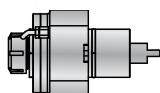
## QUICK, EASY & PRECISE



The patent pending Alberti SmartChange collet clamp & wrench system quickly and precisely locks the quick change adapter, reducing tool cutter changing time to a minimum.

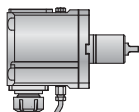
## HIGHEST ACCURACY & REPEATABILITY





## STRAIGHT TOOLS

| Tool      | Tool Type    | GH Number   | Output | Torque | RPM   |
|-----------|--------------|-------------|--------|--------|-------|
| MA-3.5    | Standard     | GH-66323-00 | SC2*   | 45     | 6,000 |
| MA-3.5 RI | Coolant Thru | GH-66617-00 | SC2*   | 45     | 6,000 |



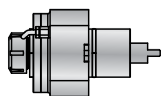
## 90° TOOLS

| Tool       | Tool Type    | GH Number   | Output | Torque | RPM   |
|------------|--------------|-------------|--------|--------|-------|
| M90-3.5    | Standard     | GH-66324-00 | SC2*   | 45     | 6,000 |
| M90-3.5 RI | Coolant Thru | GH-66621-00 | SC2*   | 45     | 6,000 |

Coolant Pressure = 70 Bar/1050 PSI • RPM = Maximum

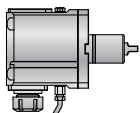
\*Each tool comes standard with an ER SmartChange Adapter, a Main Spindle Anti-Rotation Wrench & a Long Handle Wrench for Lock / Unlock Nut. For additional adapters & accessories, see below.





## STRAIGHT TOOLS

| Tool      | Tool Type    | GH Number   | Output | Torque | RPM   |
|-----------|--------------|-------------|--------|--------|-------|
| MA-2.5    | Standard     | GH-66741-00 | SC2*   | -      | 6,000 |
| MA-2.5 RI | Coolant Thru | GH-66742-00 | SC2*   | -      | 6,000 |



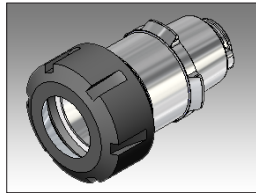
## 90° TOOLS

| Tool       | Tool Type    | GH Number   | Output | Torque | RPM   |
|------------|--------------|-------------|--------|--------|-------|
| M90-2.5    | Standard     | GH-66743-00 | SC2*   | 25     | 6,000 |
| M90-2.5 RI | Coolant Thru | GH-66744-00 | SC2*   | 25     | 6,000 |

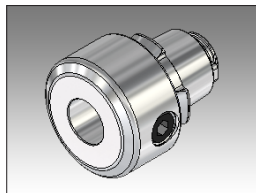
Coolant Pressure = 70 Bar/1050 PSI • RPM = Maximum

\*Each tool comes standard with an ER SmartChange Adapter, a Main Spindle Anti-Rotation Wrench & a Long Handle Wrench for Lock / Unlock Nut. For additional adapters & accessories, see below.

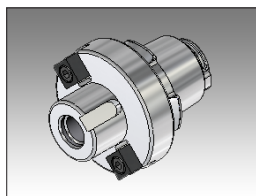
## ADDITIONAL ADAPTERS



| ER COLLETS |   |          |
|------------|---|----------|
| Size       |   |          |
| ER-20      | - | SC2-ER20 |
| ER-25      | - | SC2-ER25 |
| ER-32      | - | SC2-ER32 |



| WELDON OUTPUTS |   |          |
|----------------|---|----------|
| Size           |   |          |
| 1/4"           | - | SC2-.250 |
| 3/8"           | - | SC2-.375 |
| 1/2"           | - | SC2-.500 |
| 5/8"           | - | SC2-.625 |



| SHELL MILL ARBORS |   |            |
|-------------------|---|------------|
| Size              |   |            |
| 3/4"              | - | SC2-SM.750 |

## MEASURING FIXTURES



| SMART CHANGE TOOL POT |   |             |
|-----------------------|---|-------------|
| Size                  |   |             |
| 40 Taper              | - | GP-56661-00 |
| 50 Taper              | - | GP-56548-00 |



| HOLDING FIXTURE |  |
|-----------------|--|
| GP-56968-00     |  |

Note: Holding fixture does not include adapter and wrench.



Tel: 1.800.249.5662  
Fax: 860.623.4132

info@komaprecision.com  
www.komaprecision.com

20 Thompson Road  
East Windsor, CT 06088